

1. HIGHLIGHTS

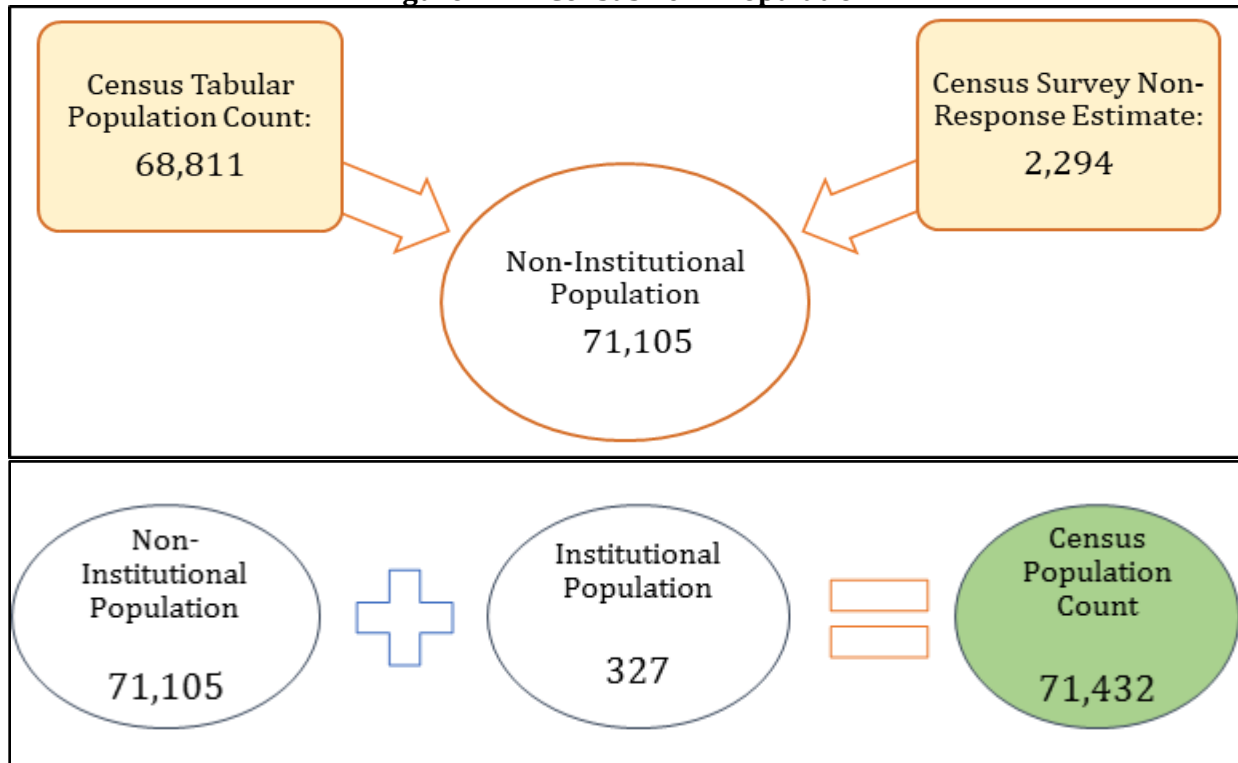
1.1 TOTAL POPULATION AND TRENDS

TOTAL COUNT AND GROWTH OVER CENSUS YEARS

This report is based on the Cayman Islands' 2021 Census of Population and Housing, conducted from 10th October 2021 to 25th January 2022. There were 29,699 households whose members were recorded as residents of the Cayman Islands on Census Day (10th October 2021). As of "Census Day", these persons stayed or intended to remain in the Cayman Islands for at least six months consecutively. This type of census is also called a *de jure* Census or usual resident population count, which makes the 2021 Census comparable to the country's previous censuses.

There were 71,432 residents of the Cayman Islands counted in the 2021 Census. This figure includes 327 persons who lived in institutions (prisons, dorms, retirement homes, etc.), denoted as the institutional population¹ (see Figure 1.1A).

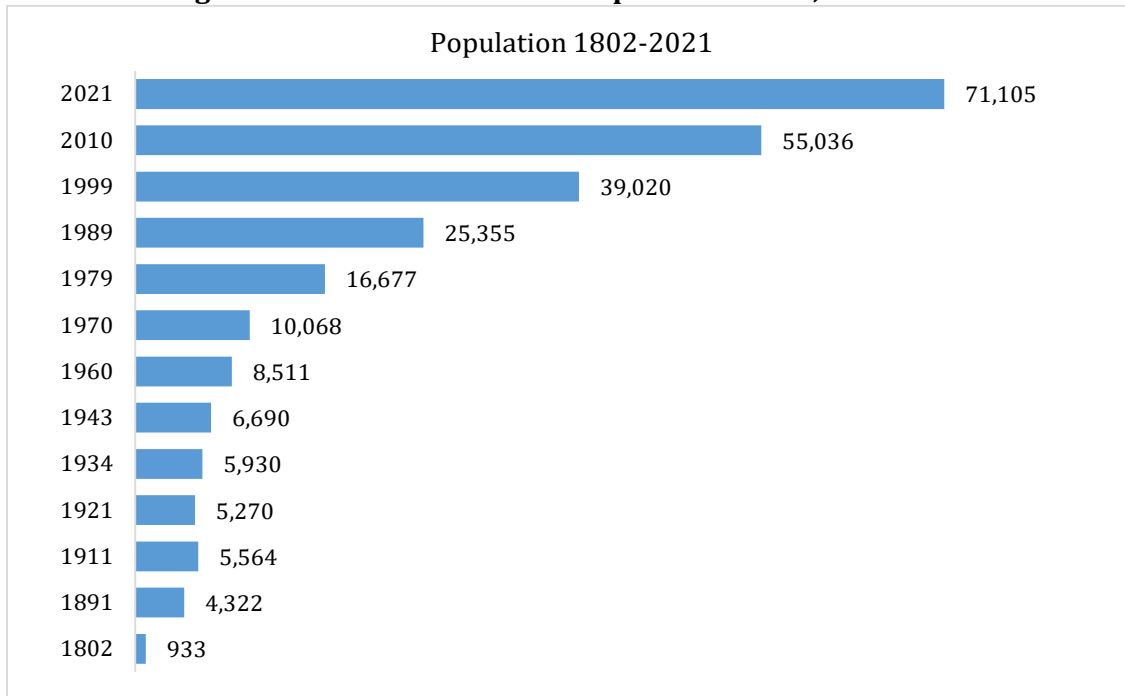
Figure 1.1A: Census 2021 Population



¹ Persons were counted in the institutional population if they were living in an institution on Census Day and living there for at least six months or will remain in the institution for six months or more. Otherwise, they were counted at their usual place of residence.

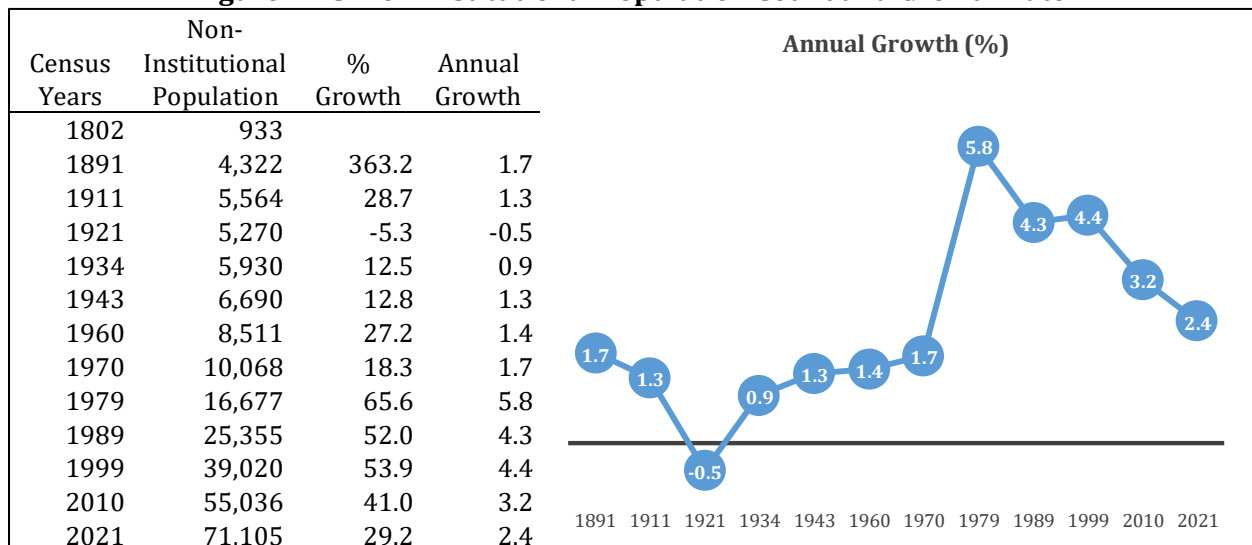
As depicted in Figure 1.1A, the non-institutional population comprised the census survey tabular population count (68,811) and the census non-response estimate (2,294). The non-response estimate was derived from household refusals and verified no contacts, which were summed and weighted by the district tabular population distribution.

Figure 1.1B: Non-Institutional Population Count, 1802-2021



The 2021 non-institutional population (otherwise referred to as the "total population") count is approximately 13.5 times the total population of the Cayman Islands that was taken a century ago (1921 Census).

Figure 1.1C: Non-Institutional Population Count and Growth Rate





The total population represents a 29.2 percent increase over the 2010 Census count. This decadal growth rate (29.2%) and its implied average annual growth rate (2.4%) were the lowest since the 1979 Census, when the implied growth was 5.8 percent (see Figure 1.1C).

1.1.2 POPULATION COUNT AND GROWTH BY DISTRICT

Except for the Sister Islands, all districts recorded double-digit growth rates in the 2021 Census relative to the 2010 Census.

In the districts of Bodden Town, West Bay, and East End, the intercensal growth was higher than the national average of 29.2 percent. Compared to previous censuses, George Town, Bodden Town, North Side and the Sister Islands' growth was slower than in 2010. In contrast, East End growth rate increased sharply, with West Bay marginally higher.

Relative to 2010, the 2021 Census growth rates of George Town were 24.3 percent, West Bay 36.6 percent, Bodden Town 40.8 percent, North Side 28.6 percent, East End 31.2 percent and the Sister Islands declined by 1.7 percent (see Figure 1.1D).

Table 1.1D: Census Population by District, 1970-2021

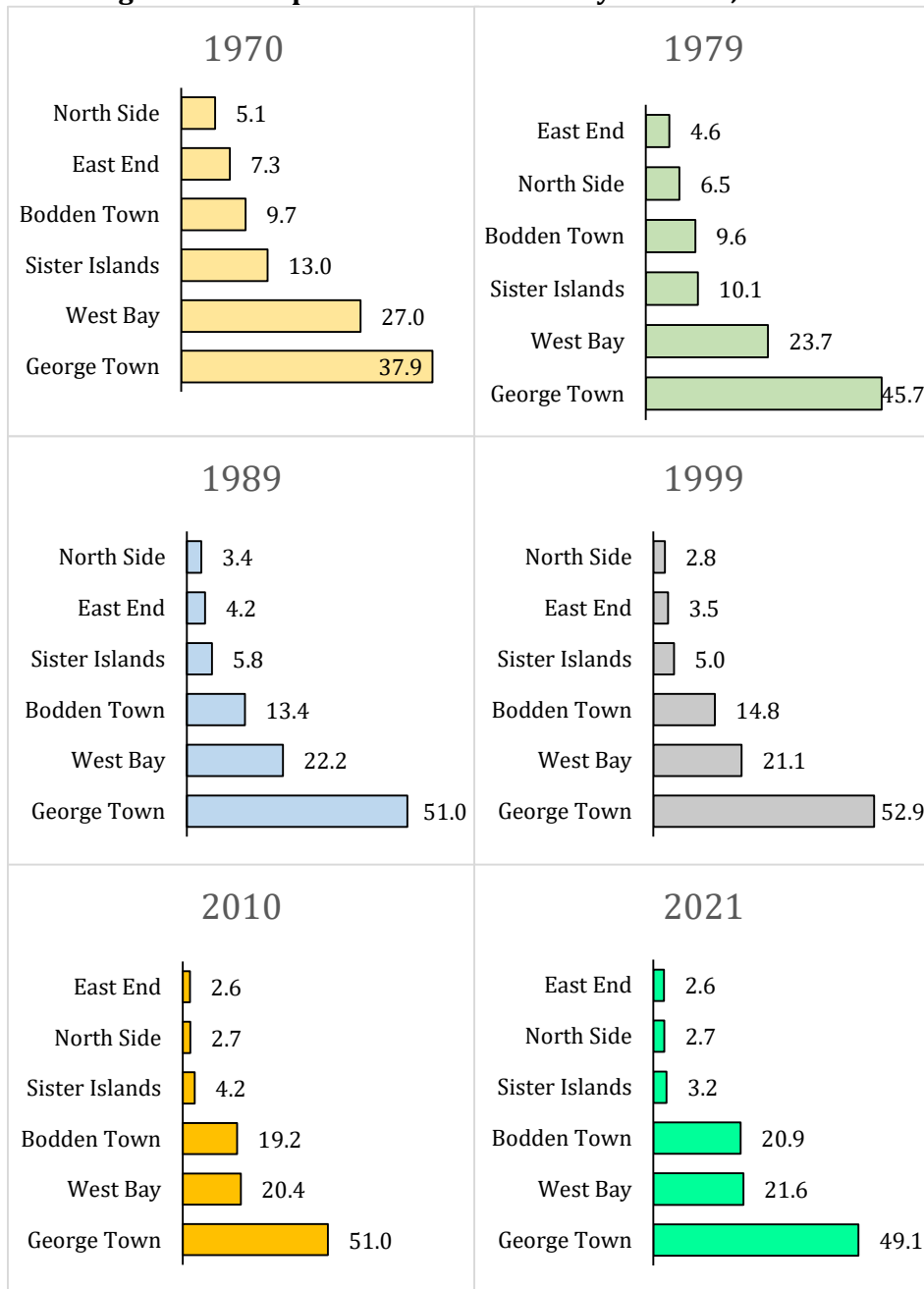
Census Years	1970	1979	1989	1999	2010	2021
Cayman Islands	10,068	16,677	25,355	39,020	55,036	71,105
George Town	3,812	7,617	12,921	20,626	28,089	34,921
West Bay	2,720	3,947	5,632	8,243	11,222	15,335
Bodden Town	976	1,594	3,407	5,764	10,543	14,845
North Side	515	1,083	857	1,079	1,479	1,902
East End	736	759	1,064	1,371	1,407	1,846
Sister Islands	1,309	1,677	1,474	1,937	2,296	2,257
Growth in Percent (%)						
Cayman Islands	18.3	65.6	52.0	53.9	41.0	29.2
George Town	40.9	99.8	69.6	59.6	36.2	24.3
West Bay	14.8	45.1	42.7	46.4	36.1	36.6
Bodden Town	19.2	63.3	113.7	69.2	82.9	40.8
North Side	10.3	110.3	-20.9	25.9	37.1	28.6
East End	10.8	3.1	40.2	28.9	2.6	31.2
Sister Islands	-11.9	28.1	-12.1	31.4	18.5	-1.7



1.1.3 POPULATION DISTRIBUTION AND TRENDS BY DISTRICT

Growth in the population precipitated changes across the districts over time; the most significant is that Bodden Town is approximately the same size as West Bay, and the share of the Sister Islands has consistently dwindled since 1970.

Figure 1.1E: Population Distribution by Districts, Percent



In proportion to the total population in 2021, Bodden Town and West Bay were higher by 1.7 and 1.2 percentage points, respectively, relative to 2010. George Town's 2021 population



share was lower than 50 percent for the first time since 1979, while North Side and East End shares remained constant compared to 2010 (see Figure 1.E).

Despite George Town maintaining the largest share of the population, the relative share declined from 51.0 percent in 2010 to 49.1 percent in 2021. The Sister Islands moved downwards from a share of 4.2 percent in the 2010 Census to 3.2 percent in the 2021 Census.

1.1.4 POPULATION COUNT, GROWTH AND DISTRIBUTION TREND BY STATUS

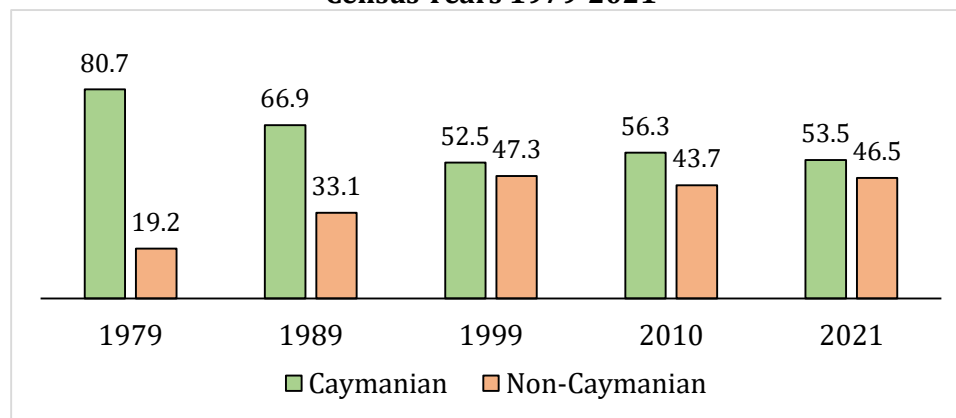
As displayed in Table 1.1F, the population in 2021 comprised 38,047 Caymanians and 33,058 Non-Caymanians². The Non-Caymanian total includes 6,378 Permanent Resident holders.

Table 1.1F: Population Count and Growth and Status 1979-2021

	Census Population	% Change	Caymanian	% Change	Non-Caymanian	% Change
1979	16,677		13,457		3,210	
1989	25,355	52.0	16,968	26.1	8,387	161.3
1999	39,020	53.9	20,491	20.8	18,453	120.0
2010	55,036	41.0	30,979	51.2	24,057	30.4
2021	71,105	29.2	38,047	22.8	33,058	37.4

The population expansion between 2010 and 2021 was due to increases in the Caymanian and Non-Caymanian populations. There were 7,068 more Caymanians, or 22.8 percent, compared to 9,001 more Non-Caymanians or an increase of 37.4 percent. In other words, there were 115 Caymanians in the population for every 100 Non-Caymanians (see Table 1.1F).

Figure 1.1G: Percent Distribution of Population by Status, Census Years 1979-2021



The percentage did not add to 100.0% in 1979 and 1999 due to Don't Know /Not Stated.

² Non-Caymanians count include Permanent Residents.



The relative share of Caymanians in the 2021 population is 53.5 percent relative to 1979 when it was at 80.7 percent and 56.3 percent in 2010. On the other hand, the Non-Caymanian relative share of the population in 2021 recovered to 46.5 percent, slighter higher than in 2010 but lower than in 1999 (see Table 1.1G).

1.1.5 POPULATION GROWTH BY STATUS, SEX AND DISTRICT

The overall increase in Non-Caymanians relative to Caymanians in 2021 was reflected in the district's population growth. This shows that in George Town, the increase in Non-Caymanians (4,627) more than doubled the increase in Caymanians (2,205) (see Table 1.1H).

Table 1.1H.1: Population Growth by Status and District

	Total Population				Caymanian				Non-Caymanian			
	2010	2021	Change		2010	2021	Change		2010	2021	Change	
	#	#	#	%	#	#	#	%	#	#	#	%
Cayman Islands	55,036	71,105	16,069	29.2	30,979	38,047	7,068	22.8	24,057	33,058	9,001	37.4
George Town	28,089	34,921	6,832	24.3	12,572	14,777	2,205	17.5	15,517	20,144	4,627	29.8
West Bay	11,222	15,335	4,113	36.6	7,098	8,744	1,646	23.2	4,124	6,591	2,467	59.8
Bodden Town	10,543	14,845	4,302	40.8	7,634	10,632	2,998	39.3	2,909	4,213	1,304	44.8
North Side	1,479	1,902	423	28.6	1,114	1,308	194	17.4	365	594	229	62.6
East End	1,407	1,846	439	31.2	1,058	1,134	76	7.2	349	712	363	104.0
Sister Islands	2,296	2,257	(39)	(1.7)	1,504	1,452	(52)	(3.4)	792	805	13	1.6
Cayman Brac	2,099	2,075	(24)	(1.1)	1,447	1,398	(49)	(3.4)	652	677	25	3.8
Little Cayman	197	182	(15)	(7.8)	57	54	(3)	(5.2)	140	128	(12)	(8.8)

All the districts had a higher percentage increase in Non-Caymanians than Caymanians. Among the districts, East End, North Side and West Bay recorded the highest percentage increase in Non-Caymanians.

Table 1.1H.2: Population Growth by Sex and District

	Total Population				Male				Female			
	2010	2021	Change		2010	2021	Change		2010	2021	Change	
	#	#	#	%	#	#	#	%	#	#	#	%
Cayman Islands	55,036	71,105	16,069	29.2	27,219	35,984	8,765	32.2	27,817	35,058	7,241	26.0
George Town	28,089	34,921	6,832	24.3	14,253	18,064	3,811	26.7	13,836	16,815	2,979	21.5
West Bay	11,222	15,335	4,113	36.6	5,492	7,778	2,286	41.6	5,730	7,549	1,819	31.7
Bodden Town	10,543	14,845	4,302	40.8	4,964	7,162	2,198	44.3	5,579	7,674	2,095	37.5
North Side	1,479	1,902	423	28.6	715	956	241	33.7	764	945	181	23.6
East End	1,407	1,846	439	31.2	684	926	242	35.3	723	920	197	27.3
Sister Islands	2,296	2,257	(39)	(1.7)	1,111	1,099	(12)	(1.1)	1,185	1,156	(29)	(2.4)
Cayman Brac	2,099	2,075	(24)	(1.1)	998	984	(14)	(1.4)	1,101	1,089	(12)	(1.1)
Little Cayman	197	182	(15)	(7.8)	113	115	2	1.7	84	67	(17)	(20.6)

Figures may not sum to total due to DK/NS

The population had slightly more males (50.6%) than females (49.3%) (see Table 1.1H.2). This permeated all districts, except Bodden Town and the Sister Islands, where the

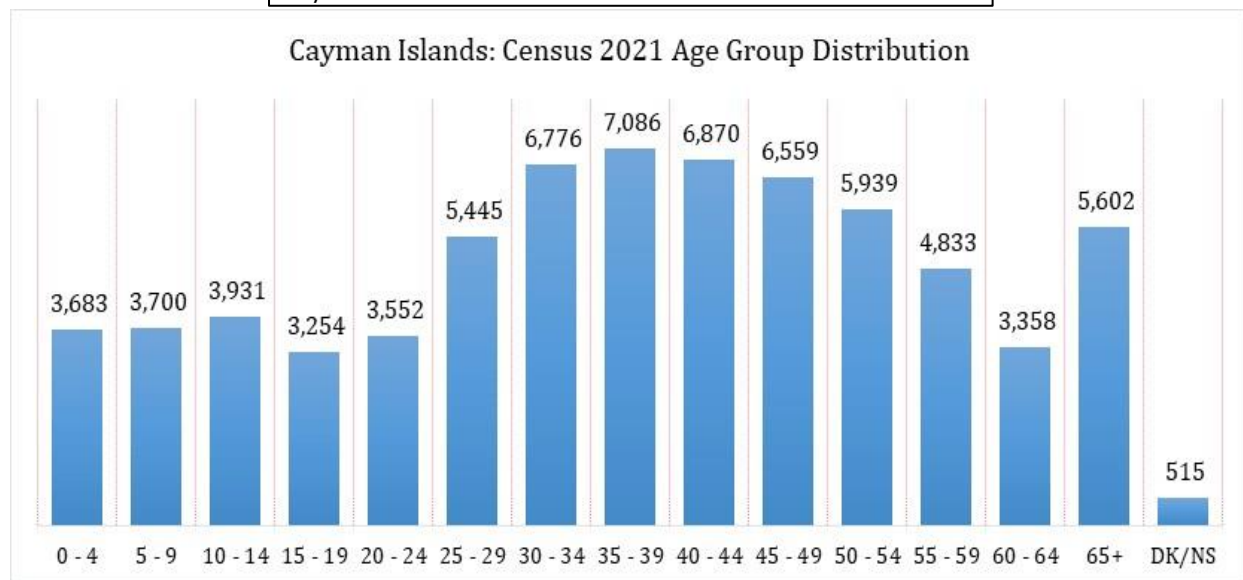
proportion of females was slightly higher than males. In Bodden Town, the percentage of females (51.7%) was relatively high compared to the other districts.

1.1.6 COMPARATIVE POPULATION GROWTH AND DISTRIBUTION BY AGE

Between the intercensal years, the highest population growth rates occurred in the 65 and older age groups. This growth was more than three times the national growth rate. Consequently, this group rose in its share of the total population from 5.1 percent in 2010 to 7.9 percent. This age bracket had the highest population growth among the districts except for East End and the Sister Islands.

Table 1.11: Census Population by Age group

Age Group	2010	2021	Change	
	#	#	#	%
Cayman Islands				
Total	55,036	71,105	16,069	29.2
0 - 14	9,968	11,315	1,347	13.5
15 - 29	10,747	12,251	1,504	14.0
30 - 49	23,167	27,291	4,124	17.8
50 - 64	8,168	14,130	5,962	73.0
65 +	2,832	5,602	2,770	97.8
DK/NS	153	515		



The 30 to 49 years age group remains the dominant group with its share of 38.4 percent of the total population, albeit this is lower compared to the 42.1 percent share posted in 2010. Despite the highest overall percentage of the 30 to 49 age group, the age group 50 to 64 accounted for the greatest increase of 5,962 persons in absolute terms (see Table 1.11).



The youngest age group (0 to 14 years) grew slower than the average population growth. Thus, the overall share of the total population slid from 18.1 percent in 2010 to 15.9 percent in 2021. This slowdown was across most districts except George Town and Bodden Town. In East End, this age group declined between 2010 and 2021, while the Sister Islands remained stable.

Age group 50 to 64 had the second-highest growth rates among all age groups nationally and in all districts. The elderly (65+ years) group had the highest growth rate nationally. Only East End and the Sister Islands posted a lower growth rate among the districts (see Table 1.1I).

Comparing growth rates in all districts, Bodden Town recorded the most robust growth rates across most age groups.

Table 1.1J: Population Count by District and Age Group

Age Group	2010 #	2021 #	Change		Age Group	2010 #	2021 #	Change	
			#	%				#	%
George Town					North Side				
Total	28,089	34,921	6,832	24.3	Total	1,479	1,902	423	28.6
0 - 14	4,548	5,260	712	15.7	0 - 14	324	335	11	3.5
15 - 29	5,516	5,647	131	2.4	15 - 29	279	384	105	37.7
30 - 49	12,960	14,768	1,808	14.0	30 - 49	508	575	67	13.2
50 - 64	3,874	6,666	2,792	72.1	50 - 64	239	393	154	64.3
65 +	1,144	2,292	1,148	100.3	65 +	119	208	89	75.0
DK/NS	46	287			DK/NS	10	6		
West Bay					East End				
Total	11,222	15,335	4,113	36.6	Total	1,407	1,846	439	31.2
0 - 14	2,078	2,355	277	13.3	0 - 14	282	268	(14)	-5.0
15 - 29	2,223	2,735	512	23.0	15 - 29	271	349	78	28.8
30 - 49	4,394	5,661	1,267	28.8	30 - 49	490	641	151	30.7
50 - 64	1,805	3,122	1,317	73.0	50 - 64	212	341	129	60.6
65 +	678	1,375	697	102.8	65 +	143	206	63	44.1
DK/NS	44	87			DK/NS	8	42		
Bodden Town					Sister Islands				
Total	10,543	14,845	4,302	40.8	Total	2,296	2,257	(39)	-1.7
0 - 14	2,393	2,754	361	15.1	0 - 14	342	342	0	0.1
15 - 29	2,026	2,796	770	38.0	15 - 29	432	340	(92)	-21.3
30 - 49	4,003	4,950	947	23.7	30 - 49	811	696	(115)	-14.1
50 - 64	1,625	3,082	1,457	89.7	50 - 64	413	527	114	27.6
65 +	466	1,182	716	153.6	65 +	283	339	56	19.9
DK/NS	30	82			DK/NS	14	12		