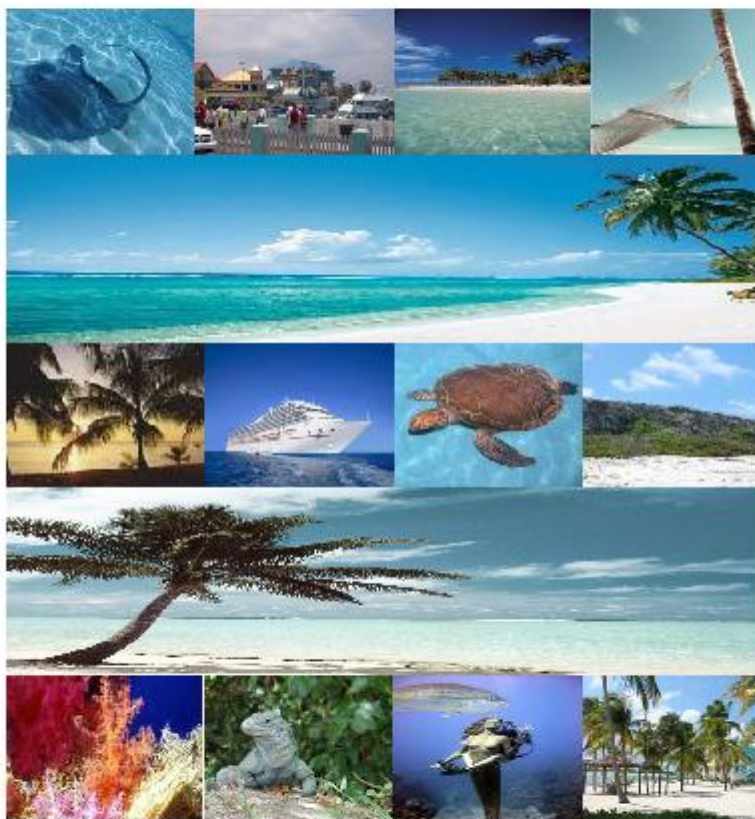


## 14. TOURISM



## 14.01

## Visitor Arrivals in the Cayman Islands, 1996 - 2009

Year	Air Arrivals		Sea (Cruise Ship) Arrivals <sup>1</sup>		
	Visitors ('000)	Percent Change	Ship Calls	Visitors ('000)	Percent Change
1996	373.2	3.3	525	800.3	17.2
1997	381.2	2.1	572	866.6	8.3
1998	404.2	6.0	518	871.4	0.6
1999	394.7	(2.4)	638	1,035.5	18.8
2000 <sup>2</sup>	354.1	(10.3)	612	1,030.9	(0.4)
2001	334.1	(5.7)	711	1,214.8	17.8
2002	302.8	(9.4)	732	1,574.8	29.6
2003	293.5	(3.1)	825	1,819.0	15.5
2004	259.9	(11.4)	732	1,693.3	(6.9)
2005	167.8	(35.4)	784	1,799.0	6.2
2006	267.3	59.3	802	1,930.1	7.3
2007	291.5	9.1	657	1,715.7	(11.1)
2008	302.9	3.9	570	1,553.1	(9.5) <sup>R</sup>
2009	272.0	(10.2)	547	1,520.4	(2.1)

**Notes:**

<sup>1</sup> Cruise ship passengers generally come ashore for less than a day.

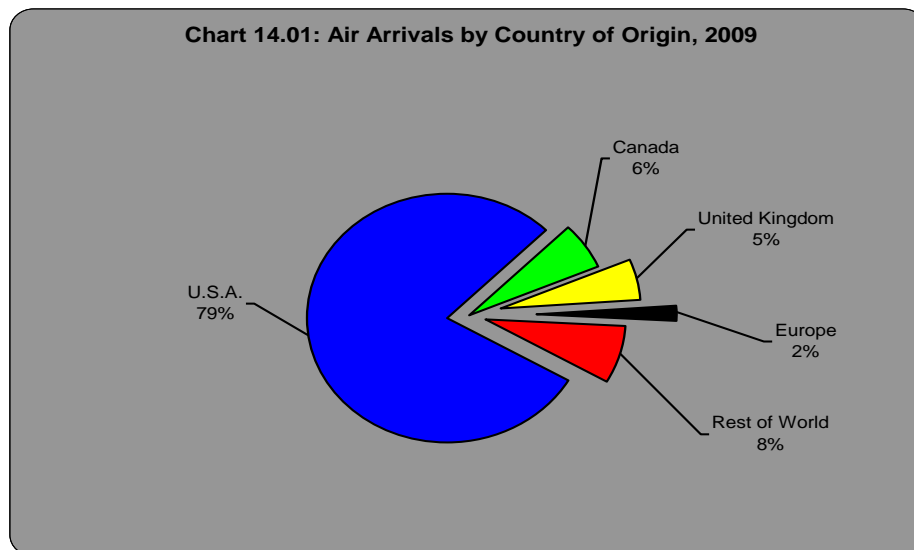
<sup>2</sup> New series starting in 2000 - returning residents were included in data prior to 2000.

Source: Department of Tourism

## 14.02

## Visitor Arrivals by Air by Country of Origin, 2005 - 2009

Country of Origin	<i>In thousands and percent</i>				
	2005	2006	2007	2008	2009
U.S.A.	118.8 70.8%	217.4 81.3%	231.9 79.6%	240.5 79.4%	215.0 79.1%
Canada	10.5 6.2%	14.9 5.6%	17.3 5.9%	18.5 6.1%	17.3 6.3%
United Kingdom	10.0 6.0%	12.8 4.8%	15.2 5.2%	15.4 5.1%	14.1 5.2%
Europe	2.7 1.6%	4.6 1.7%	5.1 1.8%	5.8 1.9%	5.1 1.9%
Rest of World	25.8 15.4%	17.6 6.6%	21.9 7.5%	22.6 7.5%	20.6 7.6%
<b>All Countries<sup>1</sup></b>	<b>167.8</b> 100%	<b>267.3</b> 100%	<b>291.4</b> 100%	<b>302.8</b> 100%	<b>272.0</b> 100%
	167.8	267.3	291.5	302.7	273.9

**Note:**
<sup>1</sup> Due to rounding off, columns may not sum up to total.


Source: Department of Tourism

## 14.03

## Visitor Arrivals by Air, 2005 - 2009

*In thousands and percent*

Month of Arrival	2005	2006	2007	2008	2009
January	9.6 5.7%	20.2 7.5%	23.7 8.1%	25.8 8.5%	23.4 8.6%
February	13.2 7.9%	25.0 9.4%	27.9 9.6%	30.4 10.0%	26.5 9.7%
March	18.8 11.2%	31.5 11.8%	35.1 12.1%	38.4 12.7%	31.2 11.5%
April	15.4 9.2%	28.4 10.6%	27.0 9.3%	30.0 9.9%	28.0 10.3%
May	12.1 7.2%	21.2 7.9%	23.4 8.0%	25.7 8.5%	21.4 7.9%
June	14.0 8.3%	24.3 9.1%	25.8 8.9%	28.0 9.2%	24.1 8.9%
July	16.6 9.9%	24.3 9.1%	26.9 9.2%	30.0 9.9%	25.8 9.5%
August	11.9 7.1%	18.1 6.8%	19.5 6.7%	21.6 7.1%	19.2 7.1%
September	8.5 5.1%	10.2 3.8%	11.5 3.9%	10.3 3.4%	9.1 3.4%
October	11.1 6.6%	14.6 5.5%	15.1 5.2%	14.7 4.9%	13.0 4.8%
November	15.0 8.9%	22.3 8.3%	25.2 8.7%	19.7 6.5%	20.6 7.6%
December	21.6 12.9%	27.4 10.2%	30.3 10.4%	28.2 9.3%	29.6 10.9%
<b>Total</b>	<b>167.8</b> 100%	<b>267.3</b> 100%	<b>291.5</b> 100%	<b>302.7</b> 100%	<b>272.0</b> 100%

Source: Department of Tourism

**14.04 Visitor Arrivals by Air: Characteristics/Visit Analysis, 2004 - 2007**

	2004	2005	2006	<i>Percent</i> 2007
<b>Sex</b>				
Female	50.7	49.3	50.3	50.9
Male	49.3	50.7	49.7	49.1
<b>Age</b>				
0-18	17.3	15.3	15.4	15.1
19-35	23.3	24.9	21.8	21.6
36-49	29.8	29.0	30.2	29.0
50-60	19.9	20.3	21.5	21.6
60+	9.7	10.6	11.1	12.8
Unknown	-	-	-	-
<b>Occupation</b>				
Managerial/ Professional	61.0	45.7	51.6	53.0
Student	6.0	13.5	14.3	15.5
Others	33.0	40.8	34.1	31.6
<b>Purpose of visit</b>				
Recreation	66.6	51.0	63.28	66.4
Business	5.5	7.3	7.17	7.2
Other	17.9	21.8	18.3	18.2
Unknown	10.1	20.0	11.25	8.3
<b>Previous visits</b>				
None	-	35.0	44.7	45.8
One	50.0	11.2	12.7	13.5
Two or more	50.0	30.6	27.5	29.2
Unknown	-	23.2	15.2	11.5
<b>Accommodation</b>				
Hotel	50.2	40.4	40.2	36.8
Apartment	22.9	16.9	18.7	20.5
Private home	15.6	21.6	14.6	15.6
Timeshare	4.1	4.2	4.2	3.9
Unknown	7.3	17.0	22.4	23.2

Source: Department of Tourism

Data for 2008 and 2009 were not available at the time of publication.

## 14.05

## Tourist Accommodation, 1992 - 2009

Year	Hotels <sup>1</sup>			Apartments/Cottages/Guest Houses							TOTAL BEDS
	number	rooms	beds <sup>2</sup>	units	one b/r	two b/r	three b/r	four b/r	rooms	beds <sup>2</sup>	
1992	22	1,798	3,596	827	252	498	76		1,476	2,952	6,548
1993	24	1,844	3,688	838	193	557	85	4	1,580	3,160	6,848
1994	27	1,940	3,880	841	190	552	98	1	1,592	3,184	7,064
1995	29	1,987	3,974	941	193	604	139	5	1,840	3,680	7,654
1996	29	2,295	4,590	936	193	604	139	4	1,837	3,674	8,264
1997	30	2,331	4,662	1,081	219	652	188	13	2,146	4,292	8,954
1998	-	2,075	4,150	870	..	..	..	..	2,141	4,282	8,432
1999	-	1,977	3,756	1,090	..	..	..	..	2,341	4,682	8,438
2000	29	2,776	3,969	..	..	..	..	..	2,453	3,960	7,929
2001	30	2,812	4,067	..	..	..	..	..	2,594	4,105	8,172
2002	29	2,690	3,960	..	..	..	..	..	2,585	4,022	7,982
2003	28	2,712	..	..	..	..	..	..	2,526	..	..
2004	25	2,473	..	..	..	..	..	..	2,635	..	..
2005	..	..	..	..	..	..	..	..	..	..	..
2006	20	2,205	..	..	..	..	..	..	1,702	..	..
2007	21	2,197	..	..	..	..	..	..	2,287	..	..
2008	22	2,188	..	..	..	..	..	..	2,417	..	..
2009	16	1,959	..	..	..	..	..	..	2,373	..	..

**Notes:**

<sup>1</sup> As of 30th September each year.

<sup>2</sup> Estimated based on an average of two (2) beds per room.

No data available for 2005 due to the severe fluctuations resulting from Hurricane Ivan in September 2004

Source: Department of Tourism

**14.06 Occupancy Rates and Length of Stay, 1995 - 2009**

Year	Occupancy Rates (%) <sup>1</sup>		Average Length of Stay (days) <sup>2</sup>	
	Hotels	Apartments	Hotels	Apartments
1995	75.3	53.9	4.7	6.8
1996	66.1	51.0	4.6	7.3
1997	66.9	48.2	4.8	7.0
1998	73.1	52.3	5.0	7.0
1999	71.8	46.9	4.7	5.8
2000	62.4	46.8	4.6	7.0
2001	55.3	43.1	4.5	7.3
2002	50.6	40.2	4.8	7.3
2003	51.2	37.7	4.7	7.4
2004	61.7	43.1	4.9	6.8
2005	55.8	46.0	4.9	6.7
2006	59.4	40.7	4.5	6.6
2007	61.7	42.5	4.7	6.7
2008	62.2	44.0	4.5	6.4
2009	59.0	43.9	4.4	6.9

**2009**

January	62.8	48.1	4.6	7.2
February	69.8	59.8	4.4	7.5
March	71.0	56.3	4.3	6.8
April	68.3	53.7	4.2	6.7
May	63.5	36.4	4.8	6.6
June	61.7	43.9	4.7	9.7
July	62.2	41.4	4.5	6.8
August	52.3	33.9	4.8	5.1
September	29.0	20.4	3.9	6.5
October	36.4	31.6	4.4	6.8
November	55.7	35.2	3.9	7.1
December	68.0	48.4	4.5	6.0

**Notes:**

<sup>1</sup> Occupancy rates are based on "number of rooms nights sold" divided by "number of room nights available". Apartment figures are based on unit occupancy.

<sup>2</sup> Length of stay is based on "number of room nights sold" divided by "number of check-in".

Source: Department of Tourism

14.07

Visitor Expenditure, 2005 - 2008

	2005	2006	2007	2008
<b><u>Stay over visitors</u></b>				
Average length of stay (nights)	7.6	6.6	6.6	6.4
Average group size	2.1	2.3	2.3	2.1
Expenditure per person per night (CI\$)	114	160	163	162
<b>Estimated Total Spending (CI\$M)</b>	<b>146</b>	<b>284</b>	<b>314</b>	<b>315</b>
<b><u>Cruise ship visitors</u></b>				
Daily expenditure	92	81	53	84
Actual Arrivals (000's)	1,799	1,930	1,716	1,553
Number of landed visitors (000's)	1,619	1,737	1,544	1,398
<b>Estimated total spending (CI\$M)</b>	<b>149</b>	<b>140</b>	<b>82</b>	<b>118</b>
<b>All visitors (CI\$M)</b>	<b>294</b>	<b>424</b>	<b>396</b>	<b>433</b>

Source: Department of Tourism, Visitor Exit Survey